

Charting the Future of **Biosolids Management** in Florida

You are invited to attend the third in the series of regional seminars to be held at the UF/TREEO Center on the dates below:

September 12, 2012 - Charting the Future

September 13, 2012 - Nutrient Management Plan (NMP) Workshop

This program will feature a panel of experts on the following topics:

- National Trends in Biosolids Management by WEF
- Chapter 62-640 F.A.C. Regulatory Drivers by Maurice Barker, FDEP (invited)
- North Florida Utility Perspectives on Future Biosolids Management Programs
- Biosolids Bioenergy Opportunities
- A Case Study on VitAg's Green Fertilizer Facility
- A Case Study on a Nutrient Management Planning for a Central Florida Ranch
- Understanding Nutrient Management Plan Process
- A Roundtable Discussion with our Panel of Experts

Seminar Details for North Florida

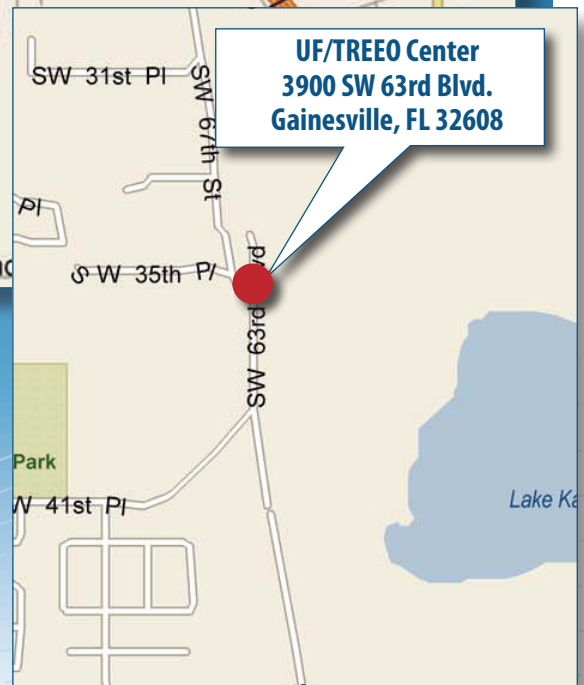
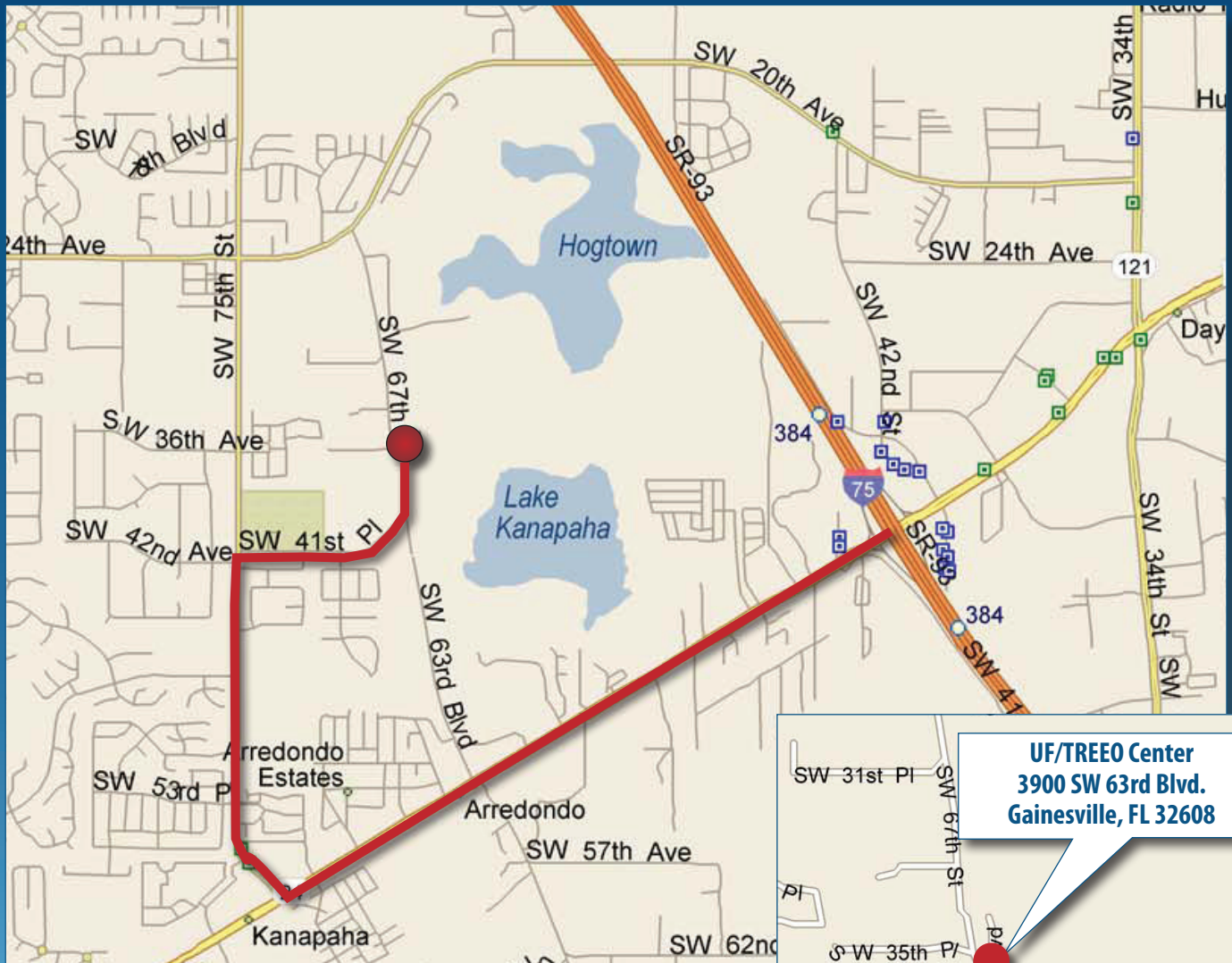
Dates	September 12 th and 13 th , 2012	
Registration Time	8:00 AM – 9:00 AM	
Program Duration	9:00 AM – 4:00 PM **Lunch provided**	
Location	UF/TREEO Center 3900 SW 63rd Blvd. Gainesville, FL 32608	
Registration Cost	<u>Pre-Registered (One-Day)</u> Member: \$100 Non-member: \$150 <u>Registration Onsite</u> Member: \$125 Non-member: \$175	<u>Pre-Registered (Two-Day)</u> Member: \$175 Non-member: \$275 <u>Registration Onsite</u> Member: \$200 Non-member: \$300
Non-Members	Register and become a WEF/FWEA member for \$90 over member rates listed above (\$91 savings!)	
Sponsorships Available: *NOTE – REGISTRATION NOT INCLUDED*	Gold Level: \$250 Silver Level: \$150	



Online registration is available for this CEU/PDH opportunity at www.fwea.org

Driving Directions to UF/TREEO

UF/TREEO Center
3900 SW 63rd Blvd.
Gainesville, FL 32608



From I-75 North or South:

- 1-75 to Exit 384
- Turn West onto SR-24/SW Archer Road; drive 2.4 mi
- Turn North (Right) onto SW 75th/ Tower Road; drive 1.2 miles
- Turn East (Right) onto SW 41st Place; drive 0.6 miles
- Bear North (Left) onto SW 63rd Boulevard; drive 0.2 miles